

Create Roaming User profile in Samba 4

Author : Shazad

Categories : [Backup Server](#), [Backup tools](#), [File Server](#), [Linux Tools](#), [Uncategorized](#)

Date : May 4, 2015



- [Facebook](#)

- [Twitter](#)

- [Google+](#)

- [Gmail](#)



www.openpath.in

Want to Become a
Linux Professional...???

Join

OPEN PATH
A path to open source

Call us : 9810179147 or write us : vikas@openpath.in



KV IT

Linux Solutions

- ❖ Mail/Proxy Server
- ❖ Firewall Solutions
- ❖ Migration from other OS
- ❖ LDAP Server
- ❖ SAMBA Server

www.linuxsolutions.org.in

A brief Introduction about Roaming Profile

Roaming profiles are user **profiles** which stores on server, that allows users with a computer joined to a Server (DC) to log on to any computer on the same network and access their profile data from server. This profile is slow than other profile while logon and logoff. After log off user account all the data switch from client computer to server on user profile.

Configuring Samba for Roaming Profiles

Login on samba 4 server with root user and check few things:

Identify running process of samba

```
[root@server ~]#ps -ef | grep samba
```

Identify on which ports and interfaces Samba is listening

```
[root@server ~]#netstat -tunlp | grep samba
```

Create one or more user in Active directory

Doamin user name: gopal and prabhat

Create a directory called “**userprofiles**” inside “/” on samba 4 server

```
[root@server ~]# mkdir /userprofiles
```

Provide full permission to directory

```
[root@server ~]#chmod 777 /userprofiles
```

Make an entry of created directory in “**smb.conf**” file for sharing purpose among users , where user profile will store on server.

```
[root@server ~]# vim /usr/local/samba/etc/smb.conf
```

```
[userprofiles]
```

```
path = /userprofiles
```

```
read only = no
```

```
valid users= gopal
```

Now, Restart the samba daemon

```
[root@server ~]# /usr/local/samba/sbin/samba
```

Or,

```
[root@server ~]# samba
```

Or,

```
[root@server ~]# smbcontrol all reload-config
```

Test now

```
[root@server ~]# kinit administrator@KVIT.IN
```

Check the available shared directory

```
[root@server ~]# smbclient -L localhost -U%
```

```
Domain=[KVIT] OS=[Windows 6.1] Server=[Samba 4.3.0pre1-GIT-d098b6c]
```

```
Sharename      Type      Comment
```

```
_____  ---  _____
```

```
netlogon      Disk
```

```
sysvol       Disk
```

```
userprofiles  Disk
```

```
IPC$          IPC      IPC Service (Samba 4.3.0pre1-GIT-d098b6c)
```

```
Domain=[KVIT] OS=[Windows 6.1] Server=[Samba 4.3.0pre1-GIT-d098b6c]
```

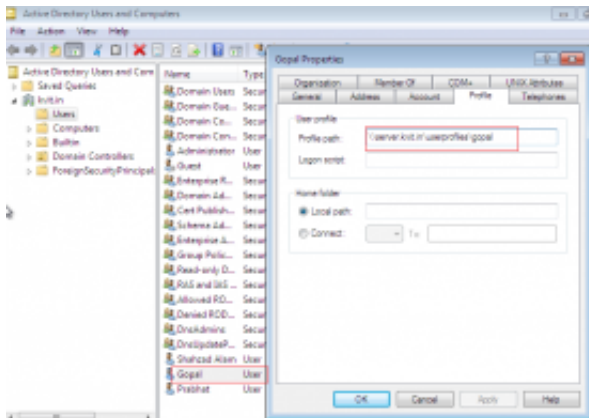
```
Server        Comment
```

```
_____  _____
```

```
Workgroup     Master
```

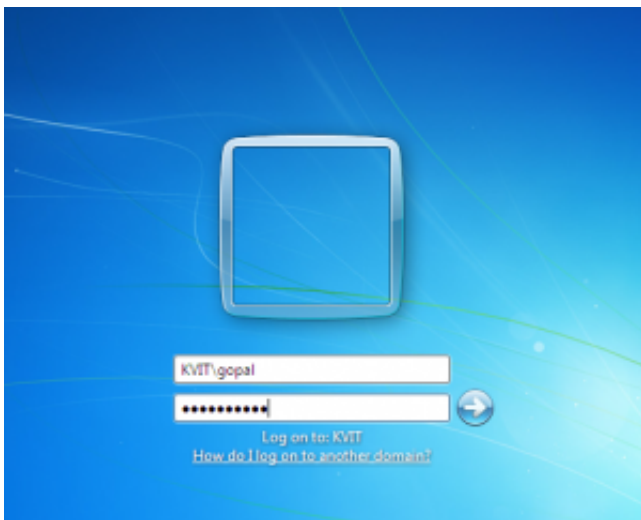
Now go to your windows client machine where you have installed the remote administration tool(AD)for your domain server and define users to whom you want set roaming profile and set the path where user profile will created on server.

Go to run prompt and type **dsa.msc** to open **Active Directory console** and set user profile path.



Now login in to client machine with domain user and check whether user profile is created or not on server and after user logout all user profile will be shift on server.

Login with above define roaming profile on client machine



Now, check the status on server

```
[root@server ~]# cd /userprofiles/
```

```
[root@server userprofiles]# ls
```

```
gopal.V2
```

After logout

```
[root@server userprofiles]# cd gopal.V2/
```

```
[root@server gopal.V2]# ls
```

output:

```
AppData  Contacts  Desktop  Documents  Downloads  Favorites  Links  Music  
NTUSER.DAT  ntuser.ini  Pictures  Saved Games  Searches  Videos
```

Now, successfully **roaming user profile** is shifted on server

[Shazad](#)



- [Facebook](#)
- [Twitter](#)
- [Google+](#)
- [Gmail](#)