

Configure Linux as a Router (Gateway) for SOHO

Author : Vikas Debnath

Categories : [Linux Security](#), [Uncategorized](#)

Date : Jun 7, 2015



- [Facebook](#)

- [Twitter](#)

- [Google+](#)

- [Gmail](#)



www.openpath.in

Want to Become a
Linux Professional...???

Join

OPEN PATH
A path to open source

Call us : 9810179147 or write us : vikas@openpath.in



KV IT

Linux Solutions

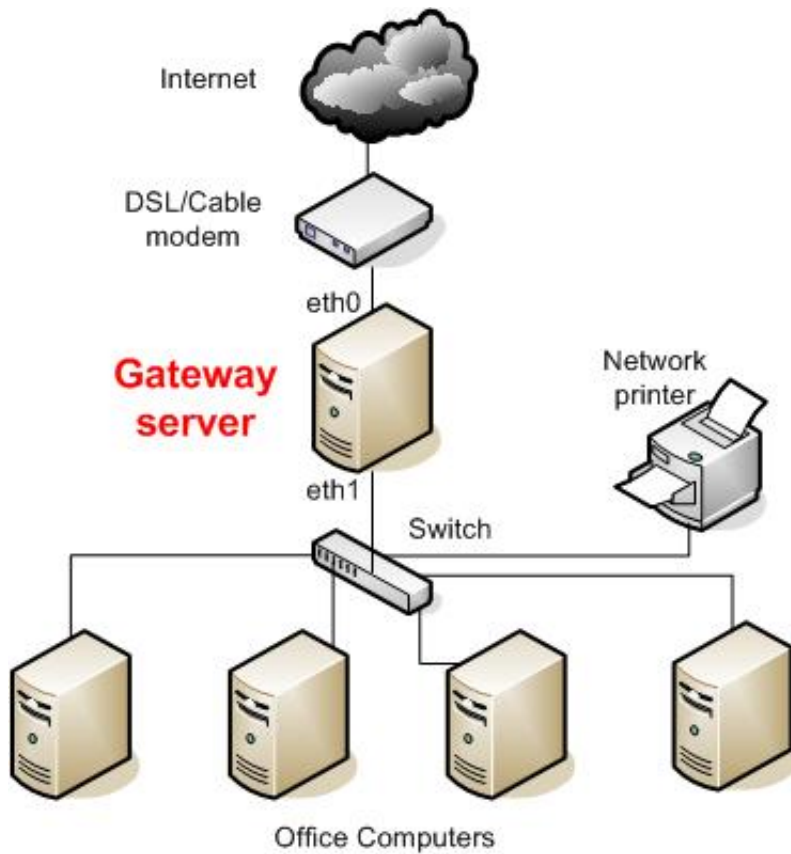
- ❖ Mail/Proxy Server
- ❖ Firewall Solutions
- ❖ Migration from other OS
- ❖ LDAP Server
- ❖ SAMBA Server

www.linuxsolutions.org.in

In this article, I am going to explain, how to set up network-address-translation (NAT) on a Linux system with iptables rules so that the system can act as a gateway and provide internet access to multiple hosts on a local network using a single public IP address. This is achieved by rewriting the source and/or destination addresses of IP packets as they pass through the NAT system.

Linux Gateway

Linux Tutorials, Guides & Resources
<http://linuxgateway.in>



Installation

Note: Article Tested on CentOS 5.4

Step by Step Installation:

Step 1: Configure Ethernet Cards, assumed that eth0 is connected to External Network and eth1 is connected to LAN (Internal Network)

```
# vi /etc/sysconfig/network-scripts/ifcfg-eth0
```

```
# Advanced Micro Devices [AMD] 79c970 [PCnet32 LANCE]
```

```
DEVICE=eth0  
BOOTPROTO=static  
IPADDR=192.168.0.65
```